

**ICCEIS: INTERNATIONAL COLLABORATION CONFERENCE
ON ISLAMIC ECONOMICS
INTERNATIONAL CONFERENCE AND CALL FOR PAPER**

**The Effectiveness of Halal Companion in Realizing Indonesia a
Center for World Halal Food**

Muhamad Wildan Fawaid¹, Yopi Yudha Utama², Yuliani³, Wafi' Nur Aziza⁴, Nandita Eka Saputri⁵

^{1,2,3,4,5}Faculty of Islamic Economics and Business, Institut Agama Islam Negeri Kediri

Article Info

Abstract

Paper type: Field Research

Research paper

Keywords:

Effectiveness; Halal Companion;

Halal Food; Indonesia

Article history:

Received: June

Revised: July

Accepted: August

Available online: September

The halalness of a product cannot only be seen with the naked eye, but also seen from the material, processing process, packaging to the distribution channel. For this reason, it is necessary to have a halal companion to ensure that everything runs in accordance with the demands of Islamic law. But apparently the competence of each halal companion is not the same, of the many halal companions registered only a few are active in the mentoring process. Therefore, this study explores the extent of the effectiveness of halal companions in the process of accelerating one million halal certifications in Indonesia. This research uses qualitative research, with a case study approach. The results are (1) Halal companions must be equipped with various field technical equipment, such as name tags, vests, jackets or hats, or letters as a form of identity or legality; (2) The halal process is a form of orchestra that must cooperate with various agencies, such as MSME data in collaboration with the Cooperative Office, NIK data in collaboration with the Population and Civil Registration Office; (3) Integration of the Business License Number system with the Identity Number, so that it remains only to enter the NIK of all the data needed to enter; (4) Escorts have a clear area or work area, so as not to fight over areas with other halal companions, and (5) Invite prospective companions to practice directly under the guidance of PPH during the training process. By carrying out these five activities, it is expected to have a positive impact on the income of MSMEs, halal certification to achieve targets and realize Indonesia as the center of halal food in the world.

*Corresponding author: wildanfawaid@iainkediri.ac.id

Introduction

The introduction contains research background, brief description of literature review from previous researches (State of the art) to show the limitation of previous research, the expected goals, the renewal of research. It is in Times New Roman 12. Unlike research report, the literature review should be in the form of previous studies (state of the art) to show the renewal of the scientific article.

Literature Review

A literature review is an objective, critical summary of published research literature relevant to a topic under consideration for research. Its purpose is to create familiarity with current thinking and research on a particular topic, and may justify future research into a previously overlooked or understudied area

Methodology

It contains research design, population, sample, techniques of data collection and analysis method, in Times New Roman 12. It does not need to present any research method for conceptual article or literature study

Results and Discussion

The result of the article contains the data analysis written descriptively using Times New Roman 12. Tables and figures in each article are three (3) at most, B&W. Discussion presents each of the findings compared to relevant theories or previous studies, facts, comments, and rational analysis from researchers. The utilization of sub-chapter in discussion corresponds to the needs of discussion.

For instance:

- Sub Chapter 1 (Times New Roman 12, bold)
- Sub Sub Chapter 1
- Sub Sub Chapter 2
- Sub Chapter 2 (Times New Roman 12, bold)
- Sub Sub Chapter 1
- Sub Sub Chapter 2
- Sub Chapter 3 (Times New Roman 12, bold)
- Sub Sub Chapter 1
- Sub Sub Chapter 2

Tables and figures should be incorporated in the text as close to the reference as possible and should be in a form suitable for publication when printed with a good quality laser printer. Figures will be printed in black and white and should be readily interpreted without the use of color. Tables and figures may extend across both columns. Captions should be Times New Roman 11- point, centered. Tables and pictures should be sequentially numbered in separate series. Captions for tables should be above the table. Captions for figures should be below the figure. Tables contains primary source should not be captioned.

Figure

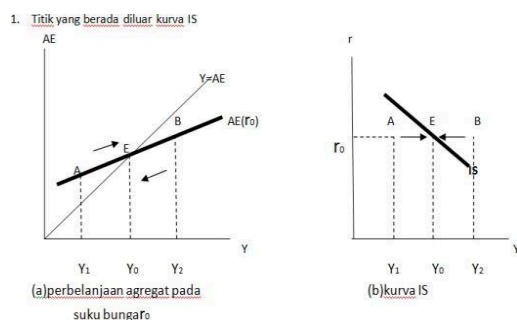


Figure 1. IS Curve

Tables

Table 1. The Growth of Islamic Banks and Conventional Banks Number Year 2013 – 2017

| Group of Banks | 2013 | 2014 | 2015 | 2016 | 2017 |
|-----------------------|-------------|-------------|-------------|-------------|-------------|
| Islamic Banks | 11 | 12 | 12 | 13 | 13 |
| Conventional Banks | 120 | 119 | 118 | 116 | 115 |
| Islamic Business | 23 | 22 | 22 | 21 | 21 |
| Islamic Rural Banks | 163 | 163 | 163 | 166 | 167 |

Source: Indonesia Banking Statistics (2013-2017)

Mathematical Formula

Mathematical formulas should be numbered and clearly presented using Microsoft Equation:

$$f(x) = a_0 + \sum_{L}^{\infty} (a_n + b_n \sin \frac{n\pi x}{L}) \quad (1) \quad \text{---}$$

$$(a_n + b_n \sin \frac{n\pi x}{L})$$

Conclusion

It contains a conclusion and suggestion. The conclusion briefly illustrates the results that address the hypotheses and research purposes or findings. The summary of the research and discussion relevant to the findings, presented descriptively, not numeric. Suggestion provides things expected to conduct related to further ideas the research has proposed.

Author's Contribution

Determine the contribution of each of your scriptwriters. A distinction is made between five types of contributions: Creating and designing analyses; Collecting data; Contributing data or analysis tools; perform analysis; Writing paper. Further contribution can be read at the [Author Contributions](#)

Acknowledgements

Both persons and institutions with contribution in the paper writing process can be mentioned here

Declaration of Competing Interest

Declare that Authors have no conflict of interest

Reference

Every source used in the article should be listed in the reference. All the references are included in the body of the article. **The references should be minimum of 40 scientific journals with DOI, and at least 80% of them were published in last 10 (ten) years. Reference form Literature Books maximum of two books in the English Language. It is suggested to use *reference manager* (e.g., Mendeley, Zotero, RefWorks, Endnote etc.) in the process of writing the text and citation. The format of writing the references uses APA 7th edition (American Psychological Association), please download how to cite: <https://libguides.csudh.edu/citation/apa-7>. All citations must be hyperlinked with references.** For help see this video:
<https://www.youtube.com/watch?v=z3Oi0Xhkd8c&t=2s>.

Book and Book Chapter

Single author:

Andreasen, N. C. (2001). *Brave new brain: Conquering mental illness in the era of the genome*. Oxford University Press.

Two author:

Copstead, L., & Banasik, J. (2005). *Pathophysiology* (3rd ed.). Saunders.

Three to twenty authors:

Schneider, Z., Whitehead, D., & Elliott, D. (2007). *Nursing and midwifery research: Methods and appraisal for evidence-based practice* (3rd ed.). Elsevier Australia.

Edited Book

Craven, I. (Ed.). (2001). *Australian cinema in the 1990s*. Frank Cass.

Chapter in Edited Book:

Ferres, K. (2001). *Idiot box: Television, urban myths and ethical scenarios*. In I. Craven (Ed.), *Australian cinema in the 1990s* (pp. 175-188). Frank Cass.

E-Book

Hirotsu, H. (2017). *Advanced analysis of variance*. John Wiley & Sons. <https://doi.org/10.1002/9781119303374>

Journal Article (Print Version)

Woolley, T., & Raasch, B. (2005). Predictors of sunburn in north Queensland recreational boat users. *Health Promotion Journal of Australia*, 16(1), 26- 31

Note: If a DOI is available for a printed article include it at the end of the reference as a URL e.g. <https://doi.org/10.1177/1049732312468251>

Journal Article (from Internet)

van Heugten, K. (2013). Resilience as an underexplored outcome of workplace bullying. *Qualitative Health Research*, 23(3), 291-301. <https://doi.org/10.1177/1049732312468251>

Online Magazine

Mehta, A. (2019, May). *Beyond recycling: Putting the brakes on fast fashion*. Ethical Corporation. <https://events.ethicalcorp.com/reports/docs/548965/EC-MagazineMay-2019.pdf> Note: When a magazine or journal does not have volume or issue numbers the publication date e.g. (2019, May) becomes the issue information used to locate the article.

Newspaper (Print & Online)

Berkovic, N. (2009, March 31). Handouts may not be sent: Tax office seeks quick resolution of High Court challenge. *The Australian*, p. 5.

Newspaper (from Internet)

Griffis, D. (2019, November 21). In traditional language, there is no word for disability. *The Guardian*. <https://www.theguardian.com/commentisfree/2019/nov/21/intraditional-language-there-is-no-word-for-disability>

Symposium contribution:

Muelbauer, J. (2007, August 30–September 1). Housing, credit, and consumer expenditure. In S. C. Ludvigson (Chair), *Housing, Housing Finance, and Monetary Policy* [Symposium]. Economic Symposium Conference, Jackson Hole, WY, United States. <https://bit.ly/2O4i6AY>

Conference session:

Fulljames, T. (2009, July 9-10). A career in tertiary management – a transformative experience! [Paper presentation]. ATEM Aotearoa Conference, Christchurch, New Zealand. <https://bit.ly/2Gbd0hG>

Audio Recordings:

Beethoven, L. van. (2020) Grosse fuge in B-flat major, op. 133. [Song recorded by Fine Arts Quartet]. On *Beethoven: Fuges and rarities for string quartet*. Naxos. (Original work published 1827)

Website

Scherer, J., & Lal, S. (2020, January 10). Tourism industry suffers as bushfire images scare off international travellers. SBS News. <https://www.sbs.com.au/news/tourism-industry-suffers-as-bushfireimages-scare-off-international-traveller>